

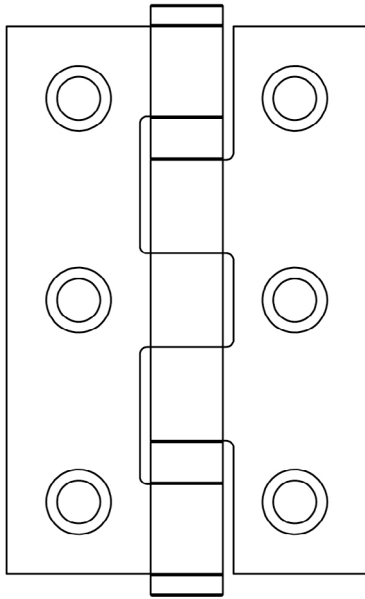
CODE

J9502

DESCRIPTION

Stainless Steel Ball Bearing Hinge

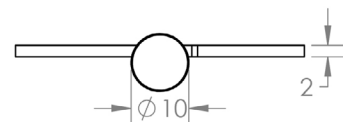
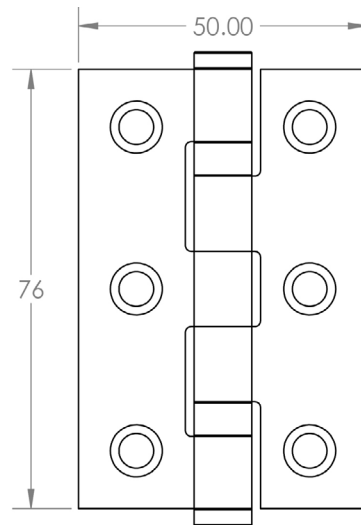
STANDARDS



PRODUCT SPECIFICATION

- Size: 76x50x2mm
- Grade 7 tested : BS EN 1935:2002
- Grade 201 stainless steel
- Suitable for FD30 minute timber doors
Fire tested when fitted with intumescent hinge pads
- Grade 4 corrosion
- Intumescent pads available
- Suitable for 40kg doors when using 3 hinges

TECHNICAL DRAWING



FINISHES

-  Antique Brass
-  Dark Bronze
-  Electro Brassed
-  Matt Black
-  Polished Stainless Steel
-  Satin Brass
-  Satin Stainless Steel

DOWNLOADS

[DoP CE \(pdf\)](#)

[DoP UKCA \(pdf\)](#)